



**CALIFORNIA
HOUSE.**

FINE GAMEROOM FURNITURE





**CALIFORNIA
HOUSE®**

FINE GAMEROOM FURNITURE

Founded in 1953, California House is the premier manufacturer of made-to-order game room furniture in the United States. Our focus is on building high quality furniture for rooms where families and friends come together to have fun.

Our unique and original products are authentically designed and built by our team in Sacramento, CA. Each piece is available in a wide selection of woods, finishes, and options that allow you to create memorable entertainment spaces to match your individual style and decor.

Every item in this catalog is proudly made just for you by California House in our small workshop in Sacramento, CA, U.S.A.



WWW.CALIFORNIAHOUSE.COM

CALIFORNIA
1933
HOUSE

TABLE OF CONTENTS:

Pool Tables -	6
Game Tables -	18
Chairs & Stools -	28
Shuffleboard Tables -	36
Pub Tables -	42
Table Tennis -	44
Bars -	48
Choices -	50





ON THE COVER:

ATHERTON COLLECTION
8' Atherton Pool Table
12' Atherton Shuffleboard
60" Atherton Game Table with
C4110 Chairs
CR550 Spectator Chairs
All Pictured in London Maple Finish

Pool Tables.



MADE JUST FOR YOU.

We make pool tables different by design. Our entire collection of pool tables are engineered from the ground up to be uniquely styled and exceptionally strong.

NOTABLE FEATURES:

- Slate-to-floor construction for unmatched strength.
- Proprietary, handmade, 100% vegetable tanned leather pockets.
- An exclusive Rail-Lock system to fasten the top rails, corners, and side aprons together.
- All tables are pre-assembled, numbered, blend sanded, and finished as one piece for a beautiful fit.
- Solid kiln-dried hardwood construction throughout the entire table. No veneers, no particleboard.
- Factory assembled and precision leveled chassis keeps your table flat, but also ties all critical components together for a stronger table.
- 1" thick, 3-piece diamond honed and backed K-pattern slate.
- Premium K-66 cushions feature fast and accurate play.
- Original designs.
- Made in Sacramento, CA, USA.



CITY

Available 7', 8', Pro 8', 9'

Pictured In:

Umber Maple Finish

Khaki Cloth

Internal Pockets



PETALUMA

Available 7', 8', Pro 8', 9'
Pictured In:
Medium Brown Maple Finish
Graphite Cloth
Internal Pockets



AUSTIN

Available 7', 8', Pro 8', 9'
Pictured In:
Caramel Distressed & Glazed Finish
Couture Royal Cloth
Internal Pockets



NEWPORT

Available 7', 8', Pro 8', 9'
Pictured In:
Coffee Maple Finish
Steel Grey Cloth
Internal Pockets



CITY

Available 7', 8', Pro 8', 9'
Pictured In:
Umber Maple Finish
Khaki Cloth
Internal Pockets



ATHERTON

Available 7', 8', Pro 8', 9'
Pictured In:
London Maple Finish
Couture Graphite Cloth
Internal Pockets



ATTENTION TO DETAIL.

A Newport pool table's diamond sights get an extra sealer coat before the final top coat finish.



POOL TABLE DINING TOP

Available 8' ONLY (Not Available on Bainbridge, District, or Origami)
Pictured In:
Coffee Maple Finish

Shown With C2001 Pool Table Dining Height Chairs
Coffee Maple Finish
Iron Gate, Tahitian Fabric

ORIGAMI.

An instant statement piece.

Designed and built for contemporary entertaining spaces, Origami combines fine woodworking and design with uncommon and asymmetrical lines, creating a sculpture that changes from every angle.



ORIGAMI

Available 7', 8', Pro 8'

Pictured In:

Glazed Smoke Finish

Navy Cloth

Internal Pockets Only



PALISADES

Available 7', 8', Pro 8', 9'

Pictured In:

Coffee Maple Finish

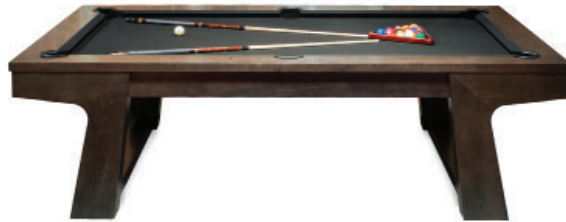
Couture Graphite Cloth

Internal Pockets



ORIGAMI

Available 7', 8', Pro 8'
Pictured In:
Glazed Smoke Finish
Navy Cloth
Internal Pockets Only



BAINBRIDGE

Available 7', 8', Pro 8'
Pictured In:
Umber Maple Finish
Black Cloth
Internal Pockets Only



LOFT

Available 7', 8', Pro 8', 9'
Pictured In:
Mystic Oak Finish
Black Cloth
Internal Pockets



DISTRICT

Available 7', 8', Pro 8'
Pictured In:
Natural Rustic White Oak Finish
Graphite Cloth
Internal Pockets Only



PALISADES

Available 7', 8', Pro 8', 9'
Pictured In:
Coffee Maple Finish
Couture Graphite Cloth
Internal Pockets



CITY CUE RACK
 Pictured In:
 Designer Grey Oak Finish
 W: 23 / D: 18.75 / H: 16.75



WALL RACK 1
 Pictured In:
 Custom Finish
 W: 33 / D: 5 / H: 66



WALL RACK 2
 Pictured In:
 Tobacco Maple
 W: 57.5 / D: 5 / H: 64



PETALUMA COLLECTION

- 8' Petaluma Pool Table
- 12' Petaluma Shuffleboard
- 60" Petaluma Game Table with C2910 Chairs
- 36" Petaluma Pub Table with S7120 Stools
- All pictured in Medium Brown Maple Finish.



EXCLUSIVELY HAND-MADE POCKETS.

We make our internal pockets by hand, exclusively for our own tables. With premium materials such as 100% vegetable tanned leather upper AND lower, black walnut bottom for a crisp "click" sound when the ball drops, hand-sewn and riveted reinforcements, and nylon straps that won't break, our tables have the best pockets in the business.



Internal Pockets; Black & Brown

THE ICONIC CITY.

Since its debut, the City Collection has been placed into high-end residential game rooms, clubhouses, campuses, and recreation rooms across the country. With its simple yet elegantly curved lines, transitional styling, and rock solid construction, City is at home in a wide variety of room styles.



Photo Credits:

Boynton Billiards, Boynton Beach, FL
 Craig Billiards, Scottsdale AZ
 Everything Billiards, Charlotte NC
 Furnitureland South, Jamestown NC
 Jay Orner, Indianapolis IN
 Seasonal Specialty Stores, Foxboro MA
 Valley Gaming, Stockton CA



CITY
 Available 7', 8', Pro 8', 9'
 Pictured In:
 Umber Maple Finish
 Khaki Cloth
 Internal Pockets



AUSTIN

Available 7', 8', Pro 8', 9'

Pictured In:

Caramel Distressed & Glazed Finish

Couture Royal Cloth

Internal Pockets



LOFT
Available 7', 8', Pro 8', 9'
Pictured In:
Mystic Oak Finish
Black Cloth
Internal Pockets

LOFT.

We looked up to find inspiration for the Loft collection. The rafters, that is. Loft was inspired by the exposed structural ceiling in what we call our "Building C". Created with an industrial, architectural look, Loft stays true to the original design down to the genuine iron bolts and washers. Overlapping cross stretchers and ultra rigid construction complete this look.



LOFT
Available 7', 8', Pro 8', 9'
Pictured In:
Designer Grey Oak Finish
Black Cloth
External Pockets



Game Tables.

Choose a top to suit your game...



REVERSIBLE TOP.

One Top. Two Tables.

Quickly go from luxurious dining table to world class game table with the simple flip of the top. Solid hardwood perimeter with carved drink holders, chip clots, or wallet trays for organization. Personalize your table with your choice of play area, Teflon(R) bathed wool cloth color, wood finish, size, shape, and style to make it yours.



TEXAS HOLD'EM.

A Party at Your House.

With a generously padded elbow rail for hours of playing comfort, deep removable stainless cup holders for easy cleaning, and padded 21 oz. Teflon (R) bathed wood cloth play field, our Texas Hold'em tables are the perfect gathering spot for you and your friends. Seats from 6-10 players – you choose the number of player positions.



PROFESSIONAL.

From Casino to Home.

The Professional Series Texas Hold'em game tables feature rock-solid build quality with replaceable components in case your party gets out of hand. Solid hardwood perimeter with carved chip slots and stainless drop-in cup holders for easy cleaning. Seats 6 or 8 players.

...then choose a base to match your style.



APTOS



ATHERTON



AUSTIN



BAINBRIDGE



CITY



CLUBHOUSE



GLEN ELLEN



HILLSBOROUGH



LOFT



PALISADES



PETALUMA



ORIGAMI



VENICE



Always by hand.

A Reversible Top being hand
sanded in preparation for
finishing.



ORIGAMI

Available 42", 48", 54", 60", 66"
Round or Octagon
Pictured In:
Medium Brown Finish
Black Cloth



PETALUMA

Available 42", 48", 54", 60", 66"
Round or Octagon
Pictured In:
Medium Brown Maple Finish
Graphite Cloth



AUSTIN

Available 42", 48", 54", 60", 66"
Round or Octagon
Pictured In:
Caramel Distressed & Glazed Finish
Couture Royal Cloth



CITY

Available 42", 48", 54", 60", 66"
Round or Octagon
Pictured In:
Umber Maple Finish
Khaki Cloth



ATHERTON

Available 42", 48", 54", 60", 66"
Round or Octagon
Pictured In:
London Maple Finish
Couture Charcoal Cloth



LOFT

Available 42", 48", 54", 60"
Round or Octagon
Pictured In:
Designer Grey Oak Finish
Black Cloth



PALISADES

Available 42", 48", 54", 60", 66"
Round or Octagon
Pictured In:
Caramel Distressed & Glazed Finish
Charcoal Cloth



GLEN ELLEN PRO

Available 60"
Round
Pictured In:
Natural Walnut Finish
Black Cloth



HILLSBOROUGH

Available 42", 48", 54", 60", 66"
Round or Octagon
Pictured In:
Medium Brown Finish
Burgundy Cloth



VENICE TX HOLD'EM

Available 72", 96"
Oval
Pictured In:
Umber Maple Finish
Khaki Cloth

3-in-1 Reversible Top Game Table with Bumper Pool



ONE TABLE. THREE PARTIES.

Our reversible top game tables give you up to three tables in one. With a top that flips from dining table to game table, you can keep the party going after dinner. And when you remove the top altogether, you have the choice of bumper pool (pictured above) or a 2" deep storage area perfect for cards and chips, or to keep a puzzle you are working on.





BAINBRIDGE
Available 42", 48", 54", 60"
Round or Octagon
Pictured In:
Umber Finish
Black Cloth



VENICE
Available 42", 48", 54", 60", 66"
Round or Octagon
Pictured In:
Umber Finish
Khaki Cloth



CITY PRO
Available 60"
Round
Pictured In:
Umber Finish
Khaki Cloth



APTOS
Available 42", 48", 54", 60", 66"
Round or Octagon
Pictured In:
Umber Finish
Camel Cloth



HILLSBOROUGH
Available 42", 48", 54", 60", 66"
Round or Octagon
Pictured In:
Caramel Distressed & Glazed Finish
Taupe Cloth



AUSTIN

Available 42", 48", 54", 60", 66"

Round or Octagon

Pictured In:

Caramel Distressed & Glazed Finish
Couture Royal Cloth



VENICE

Available 42", 48", 54", 60", 66"

Round or Octagon

Pictured In:

Umber Maple Finish
Lydia, Bark Fabric



LOFT TX HOLD'EM
Available 72" or 96"
Oval
Pictured In:
Caramel Finish
Steel Grey Cloth



TEXAS HOLD'EM

Our Texas Hold'em tables are made for serious players. Available in 72" or 96" lengths, the tables seat up to 10 guests and feature a padded elbow rail in your choice of fabric or leather, drop in stainless cup holders for easy cleaning, and a Teflon(r) bathed play surface. Optional lay-on dining top is available to convert to a dining table.

Chairs & Stools.



MADE JUST FOR YOU.

All California House chairs and stools are made to order, when you order them. You choose the finish, fabric or leather, and options that best matches your style and decor.





S100
 Pictured In:
 Caramel Distressed & Glazed Finish
 Currents Grey Fabric
 Optional Nailheads
 W: 20 / D: 18 / H: 26 or 30



S1035
 Pictured In:
 Onyx Finish
 Cowboy Black Leather
 Optional Nailheads
 W: 23.5 / D: 24.5 / H: 34 or 38



S1220
 Pictured In:
 Onyx Finish
 Sunbrella Heritage Char Fabric
 Optional Nailheads
 W: 19.5 / D: 22.5 / H: 41 or 45



C2000
 Pictured In:
 Old Pecan Finish
 Trixie Cement Fabric
 W: 19 / D: 24 / H: 32.5

PREMIUM MATERIALS = BETTER PRODUCT.

All seating pieces feature a hypoallergenic, High Resiliency (HR) open cell foam that resists mold, mildew, and dust mites.

The HR foam we use will not break down over time like other cushions. Because of this premium material, our furniture will provide the user with a more comfortable, longer lasting ownership experience.

Furthermore, California House chairs and stools DO NOT contain added flame retardant chemicals, which may be harmful to your health.

Our products pass CA-117 Technical Bulletin 2013 flammability standards by using a multi-layer construction of HR foam wrapped in a poly-fiber batting. This unique combination of materials provides chemical-free flame resistance while also adding a layer of plushness not found in foam-only construction.



C2001
 Pictured In:
 London Maple Finish
 Iron Gate Tahitian Fabric
 W: 19 / D: 24 / H: 35.5
 Pool Table Height Dining



S2020
 Pictured In:
 Natural Walnut Finish
 Cowboy Black Leather
 W: 18 / D: 21 / H: 37 or 41



S2320
 Pictured In:
 Umber Finish
 COM Fabric
 W: 19 / D: 24 / H: 42.5 or 46.5



C2910
 Pictured In:
 Umber Finish
 Lydia Bark Fabric
 W: 24 / D: 26.5 / H: 35.5



C2915
 Pictured In:
 Onyx Finish
 Currents Grey Fabric
 W: 24 / D: 26.5 / H: 34 to 36.5 (Adj)



S2920
 Pictured In:
 Medium Brown Finish
 Sheeran Pewter Fabric
 Optional Nailheads
 W: 20 / D: 25.5 / H: 43.5 or 47.5



A C2910 back is carefully assembled by hand, ensuring all joints come together properly.



S2925

Pictured In:
London Finish
Charlotte Birch Fabric
W: 24 / D: 26.5 / H: 35.5



C3010

Pictured In:
Caramel Finish
Avanti Black Fabric
Optional Nailheads
W: 24 / D: 26.5 / H: 35.5



S3020

Pictured In:
Coffee Finish
Bossanova Moonlight Fabric
W: 20 / D: 25.5 / H: 43.5 or 47.5



C4110

Pictured In:
London Finish
Dolomite Ash Leather
W: 24.5 / D: 24.5 / H: 33



S4120

Pictured In:
Caramel Distressed & Glazed Finish
Lonestar Black Leather
W: 20.5 / D: 22 / H: 37.5 or 41.5



C5510

Pictured In:
London Finish
Dolomite Anthracite Leather
W: 25.5 / D: 27 / H: 32



C6110

Pictured In:
London Finish
Dolomite Ash Leather
W: 24 / D: 26.5 / H: 35.5



C6210

Pictured In:
Medium Brown Finish
Brompton Chocolate Leather
W: 24 / D: 26.5 / H: 35.5



S7120

Pictured In:
Caramel Distressed & Glazed Finish
Laguna Chaps Leather
W: 18.5 / D: 18.5 / H: 35 or 39



C7810
 Pictured In:
 Lager Finish
 Splash Ash Fabric
 W: 26.5 / D: 27 / H: 34



C7815
 Pictured In:
 Tobacco Maple Finish
 Dapper Delft Fabric
 W: 26.5 / D: 27 / H: 34



S7820
 Pictured In:
 London Finish
 Calum Mink Fabric
 W: 23 / D: 23.5 / H: 37.5 or 41.5



C8205
 Pictured In:
 Coffee Finish
 Cartier Ivory Leather
 W: 24 / D: 27.5 / H: 37



S8225
 Pictured In:
 London Finish
 Sierra Black Oak Leather
 W: 24 / D: 27.5 / H: 37



C9810
 Pictured In:
 Caramel Distressed & Glazed Finish
 Sierra Black Oak Leather
 W: 24 / D: 26 / H: 35.5



CR768 SPECTATOR BENCH
 Pictured In:
 Coffee Finish
 Cowboy Black Leather
 W: 68 / D: 20 / H: 22, 26, or 30





S9630

Pictured In:
Willow Blue Finish with Weave Ink Fabric
London Finish with Hex Gravel Fabric
Simply White Finish with Banter Admiral Fabric

W: 23.5 / D: 23.5 / H: 26 or 30



CR550 SPECTATOR CHAIR

Pictured In:
London Finish
Odyssey, Onyx
W: 25.5 / D: 27 / H: 45
Specify Drink Holder Left or Right



S9530

Pictured In:
Espresso Finish
Cowboy Black Leather
W: 23.5 / D: 23.5 / H: 26 or 30



CR620 SPECTATOR BENCH

Pictured In:
Old English Maple Finish
Lonestar Black Leather
W: 64 / D: 20 / H: 20, 26, or 30





Shuffleboard Tables.





CITY
Available 9', 12', 14', 16', 18'
Pictured In:
Caramel Finish



ATHERTON
Available 9', 12', 14', 16', 18'
Pictured In:
London Finish



AUSTIN
Available 9', 12', 14', 16', 18'
Pictured In:
Distressed & Glazed Caramel Finish



FEATURES THAT SET US APART

California House shuffleboard tables are built differently than other tables found in the marketplace. Our goal is to provide you with a better, more refined product. Here are some examples:

INLAYED LOGO.

Our tables come standard with inlayed black walnut logo and scoring areas. Custom logos available.



BETTER LUMBER.

All playfields are made from beech, with is 11% more rigid and 19% more shock resistant than maple.



PADDED COLLARS.

Protect your investment with decorative and functional padded end collars. You choose the color.



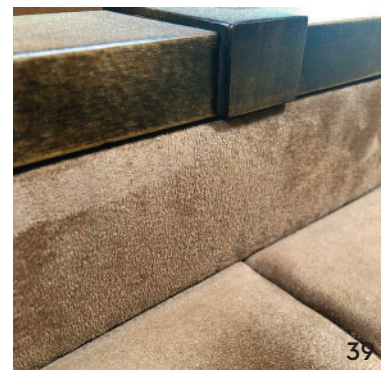
FINE ADJUSTMENT.

The climate adjusters beneath the playfield use 1/2" diameter all-thread with 20 threads per inch for massive strength and solid adjustability.



PREMIUM ALLEYS.

Our alleys feature 100% polyester micro-fiber fabric for easy cleaning and tailored appearance. Eleven colors to choose from.



12' PLAYFIELD
Pictured with optional Red "CH" logos.



BAINBRIDGE

Available 9', 12', 14', 16', 18'
Pictured In:
Umber Finish



DISTRICT

Available 9', 12', 14', 16', 18'
Pictured In:
Umber Finish



NEWPORT

Available 9', 12', 14', 16', 18'
Pictured In:
Caramel Finish



HILLSBOROUGH

Available 9', 12', 14', 16', 18'
Pictured In:
Designer Grey Oak Finish



LOFT

Available 9', 12', 14', 16', 18'
Pictured In:
Distressed & Glazed Caramel Finish



ORIGAMI
Available 9', 12', 14', 16', 18'
Pictured In:
Coffee Finish



PALISADES
Available 9', 12', 14', 16', 18'
Pictured In:
Umber Finish



PETALUMA
Available 9', 12', 14', 16', 18'
Pictured In:
Medium Brown Maple Finish



Pub Tables.



CITY
Available 36", 42"
Pictured In:
Umber Finish



CLUBHOUSE
Available 28"
Pictured In:
London Finish



GLEN ELLEN
Available 24", 30", 36", 42"
Pictured In:
Natural Walnut Finish

SPACE SAVING DESIGN.

The perfect space saving solution for gathering family and friends together, our pub tables are available in several sizes, heights, styles, and finishes to compliment your room and style.



HILLSBOROUGH
Available 24", 30", 36", 42"
Pictured In:
Designer Grey Oak Finish



PETALUMA
Available 30", 36", 42"
Pictured In:
Medium Brown Finish



ATHERTON
Available 30", 36", 42"
Pictured In:
Mystic Oak Finish



VENICE
Available 30", 36", 42"
Pictured In:
Umber Finish

Table Tennis.





ATHERTON
Available 48×86 or 60×108
Pictured In:
London Finish
Natural Beech Top



CITY
Available 48×86 or 60×108
Pictured In:
Umber Finish
Natural Beech Top



PETALUMA
Available 48×86 or 60×108
Pictured In:
Caramel Finish
Natural Beech Top



AUSTIN
Available 48×86 or 60×108
Pictured In:
Coffee Finish
Natural Beech Top





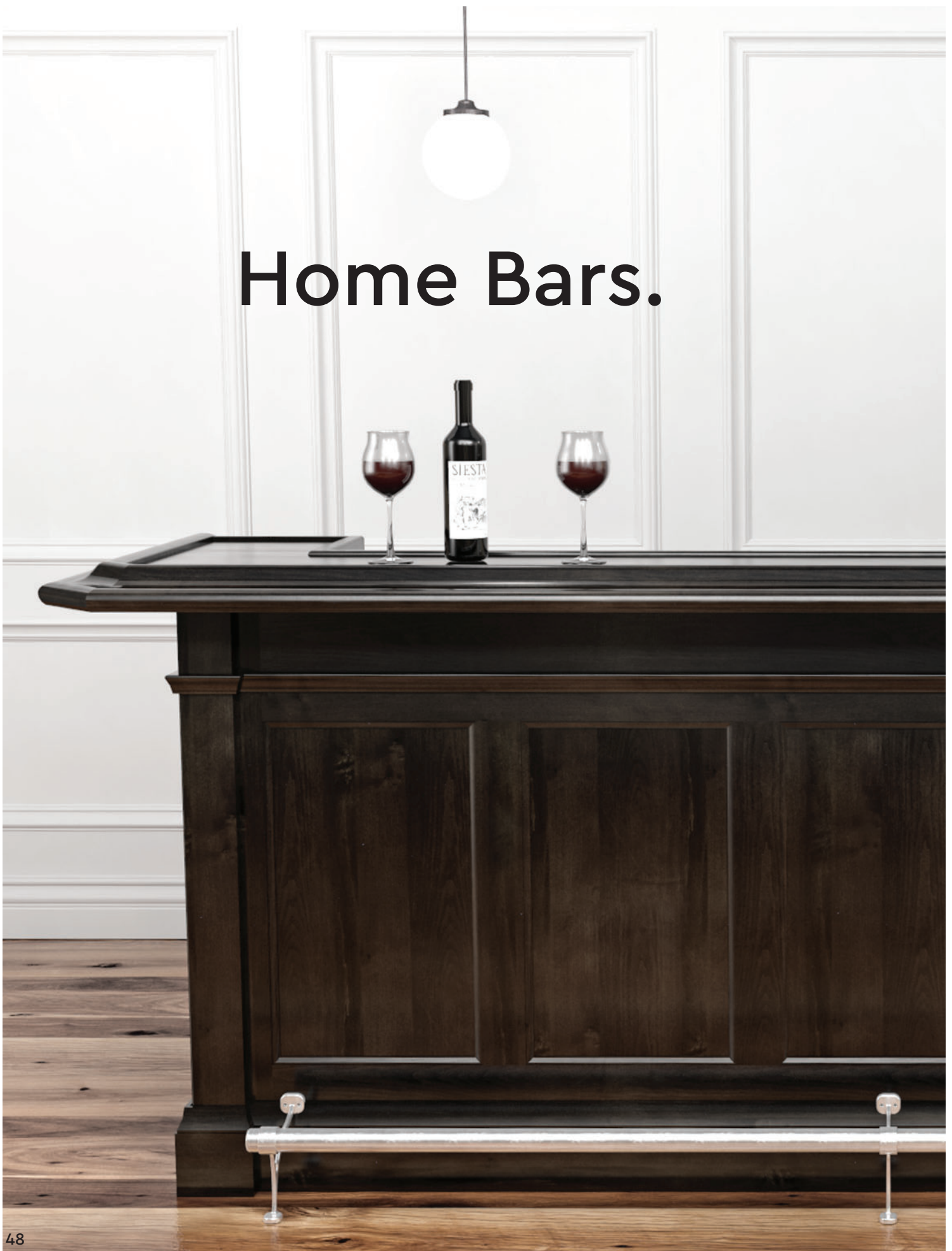
FROM DINNER TO GAME NIGHT IN SECONDS.

Would you like to entertain family and friends after dinner but don't have the space for a game room? Our table tennis tables are made just for you!

Available in two sizes, regulation 60" x 108" and our most popular 48" x 86" dining table size, our table tennis tables quickly convert from dining to table tennis in seconds. Simply pull the leaves apart, slip in the natural walnut "net", and you are done.

As with everything made by California House, you choose the finish and style that best matches your room.

Home Bars.





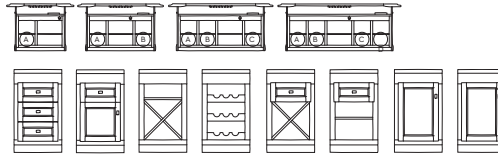
Deluxe Back-Bar



Hanging Back-Bar



Return Bar



BUILD YOUR OWN BAR.

The California House Build Your Own Bar (BYOB) system is designed to fit your space, style, and serving preferences with thousands of combinations of simple to choose configurations and options. Each piece is custom made just for you to make sure your needs are met when it comes to entertaining.



RUTHERFORD.

MARIN.



Options – lots of them.

It's what makes California House furniture uniquely your own.

Every piece of California House furniture begins with your vision. You get to choose the product style, wood species, wood finish color, wood finish details, fabric or leather color, and decorative details. We will then make your furniture just for you.

Please talk to your local Authorized California House Dealer or Interior Design professional about starting a project. We can't wait to see what you create.

Decorative Nail Treatment.

Chairs & Stools



Bronze Renaissance



Brushed Nickel



French Antique



Hammered Nickel



Stainless Steel



Hammered Antique



XL French Antique



XL Brushed Nickel



XL Bronze Renaissance



XL Diamond Nickel

Professional & Texas Hold'em Tables



Table Bronze Renaissance

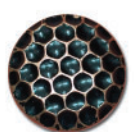


Table Hammered Oxford



Table French Antique



Table Hammered Nickel

To view our complete assortment of options, please visit www.californiahouse.com or scan the QR code below.





We stock 100's of the
finest designer fabrics
and leathers.

ALL PRODUCTS MADE IN THE U.S.A.

3316 51ST AVENUE
SACRAMENTO, CA 95823
WWW.CALIFORNIAHOUSE.COM

(1019)



Page 6



Page 18



Page 28



Page 36



Page 42



Page 44



Page 48